

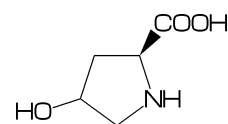
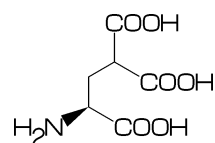
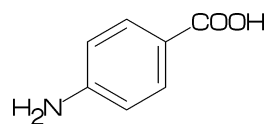
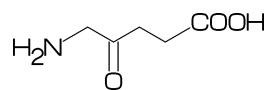
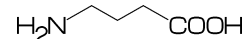
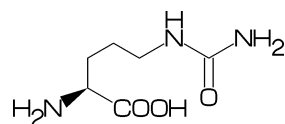
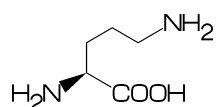
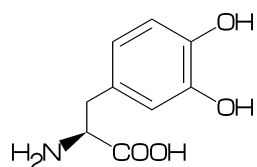
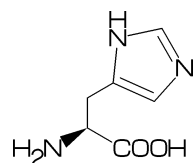
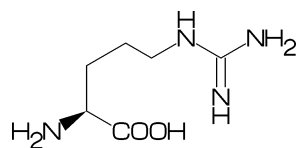
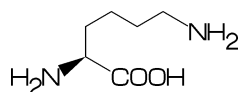
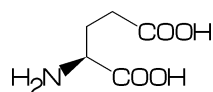
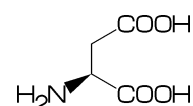
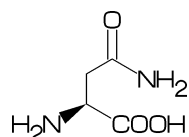
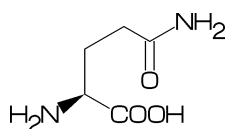
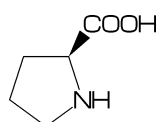
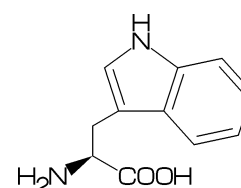
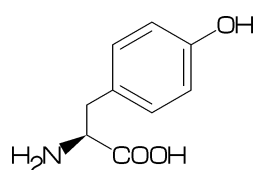
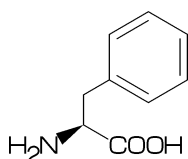
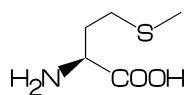
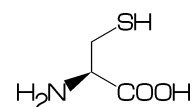
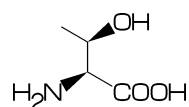
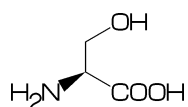
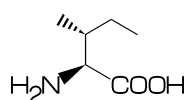
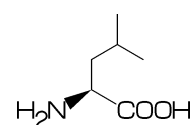
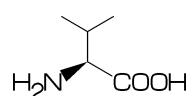
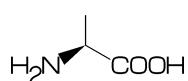
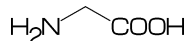
Molecular Coding Format manual

Akira Yamaji

August 30, 2020

Located at <http://www.ctan.org/pkg/mcf2graph>

Suggestion or request mail to: mcf2graph@gmail.com



Contents

1	Introduction	3
2	MCF syntax	3
2.1	Make bond	3
2.1.1	Chain	3
2.1.2	Chain use !,ln	3
2.1.3	Jump to atom	3
2.1.4	Branch bond	3
2.1.5	Branch modified bond	3
2.1.6	Connect atom	3
2.1.7	Ring	3
2.1.8	Rotate current angle	3
2.2	Change bond type	4
2.2.1	Double,triple	4
2.2.2	Wedge	4
2.2.3	Vector	4
2.2.4	Dotted,wave	4
2.2.5	Change multiple bond type	4
2.2.6	Over line	4
2.3	Change bond length	4
2.3.1	Chain length	4
2.3.2	Ring length	4
2.4	Change atom	4
2.4.1	Insert atom	4
2.4.2	Addressed atom	5
2.4.3	Brock address	5
2.4.4	Reset brock address	5
2.4.5	Absolute address	5
2.4.6	Relative address	5
2.4.7	Charged atom	5
2.5	Fuse ring	5
2.5.1	Attached 1 bond	5
2.5.2	Attached 2 bond	5
2.5.3	Attached 2 bond	6
2.5.4	Attached 4 bond	6
2.5.5	Spiro ring	6
2.6	Group	6
2.6.1	Insert group	6
2.6.2	Insert modified group	6
2.6.3	Add group	6
2.6.4	Add modified group	6
2.7	Chain environment	7
2.7.1	Horizontal,vertical	7
2.7.2	Left-right,right-left	7
2.7.3	Fixed rotate angle	7
2.7.4	Multi rotate angle	7
2.8	Miscellaneous	7
2.8.1	Change atom and add group	7
2.8.2	Make block	7
2.8.3	Parts definition	7
2.8.4	Parts inline definition	7
3	Option parameter	8
3.1	Angle parameter	8
3.2	Size/Ratio parameter	8
3.2.1	Bond length	8
3.2.2	Molecular size	8
3.2.3	Molecular position	8
3.3	Size parameter	8
3.3.1	Font size	8
3.3.2	Font margin	8
3.3.3	Offset thickness of bond	8
3.3.4	Offset of doublebond gap	8
3.3.5	Offset of atom width	9
3.3.6	Offset of wedge width	9
3.3.7	Max bond length	9
3.4	Ratio parameter	9
3.4.1	Thickness/bond length	9
3.4.2	Char/bond thickness	9
3.4.3	Bondgap/bond length	9
3.4.4	Atom/bond length	9
3.4.5	Wedge/bond length	9
3.4.6	Font atom gap/atom length	9
3.4.7	Chain/ring length	9
3.4.8	Zebra gap/bond length	9
3.5	Drawing mode	10
3.5.1	Numbering atom	10
3.5.2	Numbering bond	10
3.5.3	Trimming mode	10
3.5.4	Expand mode	10
3.5.5	Group off mode	10
3.5.6	Single bond mode	10
3.6	Frame	10
3.6.1	Font frame	10
3.6.2	Molecular frame	10
3.6.3	Atom frame	10
3.7	Parameter setting	11
3.7.1	Local parameter setting	11
3.7.2	Global parameter setting	11
4	Function	11
4.1	Function MC()	11
4.2	Function MCat()	11
4.3	Function add()	12
4.4	Function ext()	13
4.4.1	Local ext() setting	13
4.4.2	Global ext() setting	13
5	MCF example	14
5.1	Luciferin	14
5.2	Colchicine	14
5.3	Paclitaxel	14
5.4	Lycorine	14
5.5	Gibberellin	14
5.6	Quinine	14
6	Example to use mcf2graph	15
6.1	Molecular definition file	15
6.2	Information auxfile output	16
6.3	Report output	17
6.4	MOL file output	18
6.5	LuaTeX file example	19
6.6	LaTeX file example	20

1 Introduction

Molecular Coding Format(MCF) is new linear notation represent chemical structure diagrams. This Coding is named from programing technique such as operator, array, scope, macro, adressing, etc. mcf2graph convert from MCF to pk font, PNG, SVG, EPS, MOL file. It is also able to calculate molecular weight, exact mass, molecular formula.

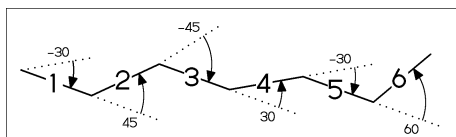
2 MCF syntax

2.1 Make bond

2.1.1 Chain

real number plus (+): Counterclockwise
real number minus(-): Clockwise

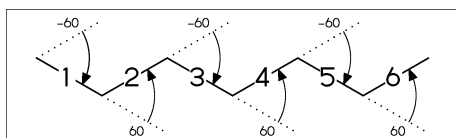
```
<-10,-30,45,-45,30,-30,60
```



2.1.2 Chain use !,!n

! : take value 60 or -60 depend on current angle and enviroment
!6 : !,!,!,!,!,!

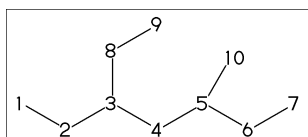
```
<-30,! ,! ,! ,! ,! ,!  
<-30,!6
```



2.1.3 Jump to atom

n:@ : Jump to An
** An: atom number(-999<=n<=4095)

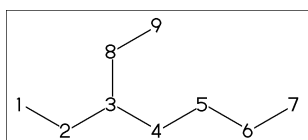
```
<-30,!6,3:@,0,! ,5:@,-30
```



2.1.4 Branch bond

```
3:\ : 3:@,0
```

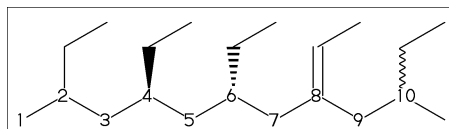
```
<-30,!6,3:\,!
```



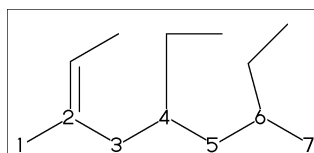
2.1.5 Branch modified bond

```
2:\ : 2:@,0  
4:* \ : 4:@,0~wf  
6:\* : 6:@,0~zf  
8:\\ : 8:@,0~dm  
10:* \* : 10:@,0~vw
```

```
<30,!8,  
2:\,! ,4:* \,! ,6:* \,! ,8:\\,! ,10:* \,! ,!
```



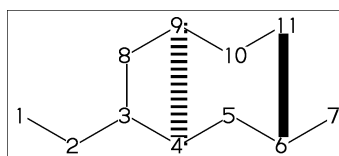
```
<30,!6,  
2:\~dr,! , : 2:@,0~dr,!  
4:\'1.5,-90, : 4:@,0'1.5,-90  
6:\^15,-60 : 6:@,0^15,-60
```



2.1.6 Connect atom

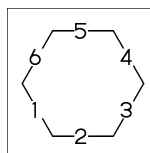
n:# : Connect to An
n1@#n2 : n1:@,n2:#

```
<-30,!6,3:\,! ,3,6:#~bd,9@#4~bz
```



2.1.7 Ring

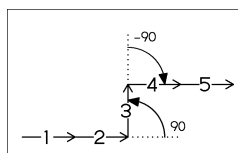
?n : n membered ring(3<=n<=20)
?6 : <-120,60,60,60,60,60,1:#
?6



2.1.8 Rotate current angle

<angle : rotate current angle

```
0,0,<90,0,<-90,0,0,{1,2,3,4,5}=vf
```

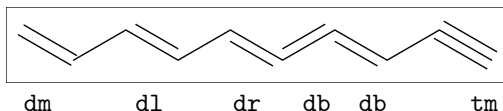


2.2 Change bond type

2.2.1 Double, triple

a~type : ~type,a
dm : double middle
dl : double left side
dr : double right side
db : double left or right side
tm : triple
!! : !~db / !!! : !~tm

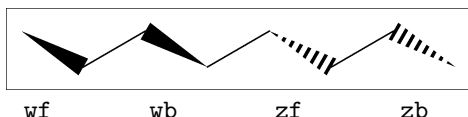
```
<-30,!~dm,!~dl,!~dr,!~db,!~db,!~tm  
<-30,!~dm,!~dl,!~dr,!! ,!! ,!,!!!
```



2.2.2 Wedge

wf : wedge forward / wb : wedge backward
zf : wedge dotted
zb : wedge dotted backward

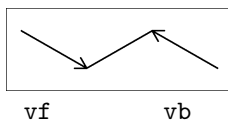
```
<-30,!~wf,!~wb,!~zf,!~zb
```



2.2.3 Vector

vf:vector forward / vb:vector backward

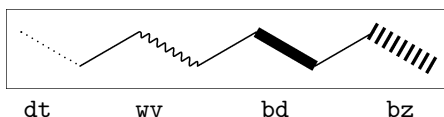
```
<-30,!~vf,!~vb
```



2.2.4 Dotted,wave

Bn=bond type : change bond type at Bn
dt : dotted / wv : wave
bd : broad / bz : broad dotted

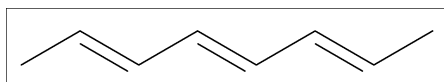
```
<-30,!7,1=dt,3=wv,5=bd,7=bz
```



2.2.5 Change multiple bond type

```
{2,4,6}=dr : 2=dr,4=dr,6=dr
```

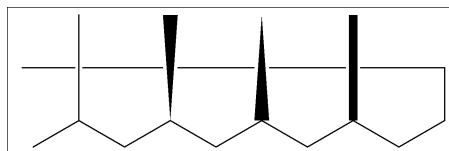
```
<30,!7,{2,4,6}=dr
```



2.2.6 Over line

si_ : single over line
wf_ : wedge forward over line
wb_ : wedge backward over line
bd_ : broad over line

```
<30,!8,!60,90'8,  
{2~si_,4~wf_,6~wb_,8~bd_}:/_ '2
```



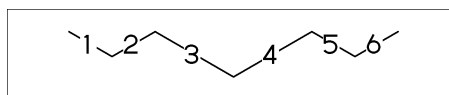
2.3 Change bond length

2.3.1 Chain length

(!,!n)'length : change length of !,!n

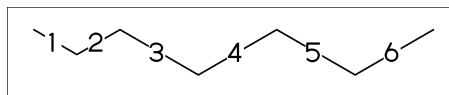
```
<-30,!2,!2'1.2,!2
```

```
** !2'1.2 : ''1.2,!2
```



'length : change all bond length after

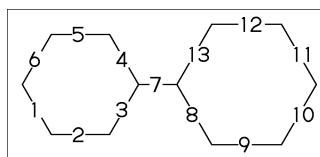
```
<-30,!2,' '1.2,!4
```



2.3.2 Ring length

?n'length : change ring length

```
?6,4:\,?6'1.2
```

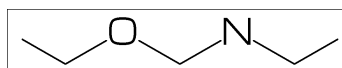


2.4 Change atom

2.4.1 Insert atom

Insert hetero atom

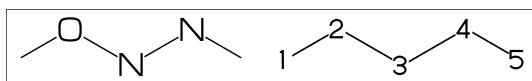
```
<-30,!2,0,!2,N,!2
```



2.4.2 Addressed atom

2:0 : change A2 C to O
 {3,4}:N : change A3,A4 C to N

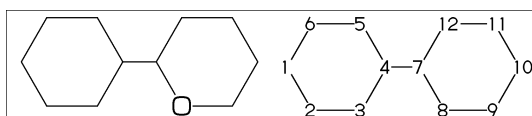
<30,!4,2:0,{3,4}:N



2.4.3 Brock address

| : divide brock

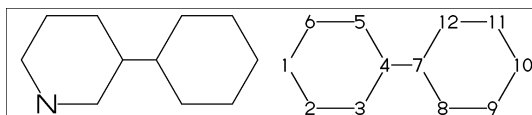
?6,4:\,|,?6,2:0



2.4.4 Reset brock address

|| : reset brock address

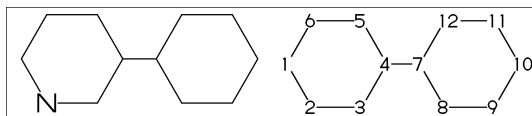
?6,4:\,|,?6,||,2:N



2.4.5 Absolute address

\$2:N : change A\$2 C to N
 ** \$n : (1<=n<=3095)

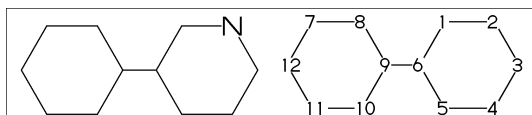
?6,4:\,|,?6,\$2:N



2.4.6 Relative address

-2:N : change A(-2) C to N
 ** -n : (1<=n<=999)

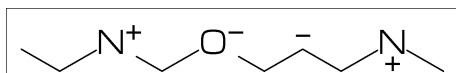
?6,4:\,?6,-2:N



2.4.7 Charged atom

N[1]:N+ / O[-1]:O- / A,&"c":A+c

<-30,!2,N[1],!2,O[-1],
 !2,&"-" ,!2,N,&"+"^180,!

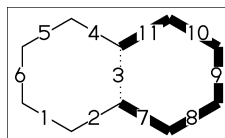


2.5 Fuse ring

2.5.1 Attached 1 bond

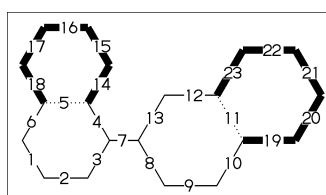
?6,3=?6 : fuse ?6 at B3
 ** Bn(n:-999<=n<=4095): bond number

?6,3=?6



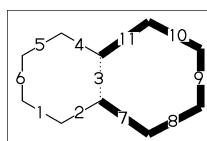
** fused ring size depend on
 attached bond length

?6,4:\,?6^1.2,5=?6,11=?6

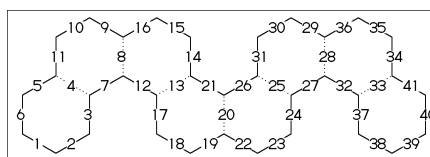


?6,3=?6[13] : fuse ?6[13] at B3
 ?6[13]: 6 membered ring scaled 13/10
 ** ?m[n] (5<=m<=8,11<=n<=15)

?6,3=?6[13]



?6,{-3,-4,-4,-2,-2,-4,-4}=?6
 ?6,{4,8,13,20,25,28,33}=?6



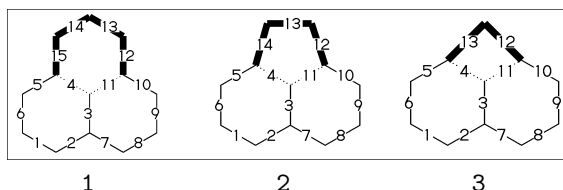
2.5.2 Attached 2 bond

(4,11)=?6[4] : fuse 4/6 ring to B11..B4
 (4,11)=?5[3] : fuse 3/5 ring to B11..B4
 (4,11)=?4[2] : fuse 2/4 ring to B11..B4
 ** ?m[n] (4<=m<=6,n=m-2)

1:<30,?6,3=?6,(11,4)=?6[4]

2:<30,?6,3=?6,(11,4)=?5[3]

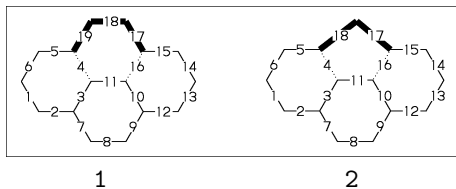
3:<30,?6,3=?6,(11,4)=?4[2]



2.5.3 Attached 2 bond

(16,4)=?6[3] : fuse 3/6 ring to B16..B4
 (16,4)=?5[2] : fuse 2/5 ring to B16..B4
 ** ?m[n] (5<=m<=6,n=m-3)

1:?6,{3,10}=?6,(16,4)=?6[3]
 2:?6,{3,10}=?6,(16,4)=?5[2]

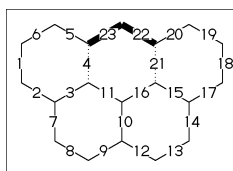


2.5.4 Attached 4 bond

(21,4)=?6[2] : fuse 2/6 ring to B21..B4

MC(<-30,?6,{3,10,15}=?6,(21,4)=?6[2])

** ?m[n] (m=6,n=2)

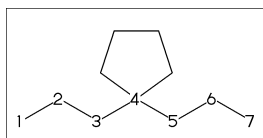


2.5.5 Spiro ring

4:@,?5 : add ?5 at A4

<30,!6,4:@,?5

An:@ : jump to An



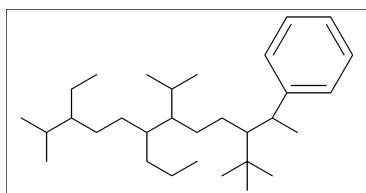
2.6 Group

2.6.1 Insert group

/ : single

<-30,!/,Me,!/,Et,!3,/Pr,!/,iPr,
 !3,/tBu,!/,Ph^-30,!)

** Me:methyl(/_) Et:ethyl(!)
 Pr:propyl(!2) iPr:isopropyl
 tBu:tertial buthyl Ph:phenyl



2.6.2 Insert modified group

// : double (double middle)

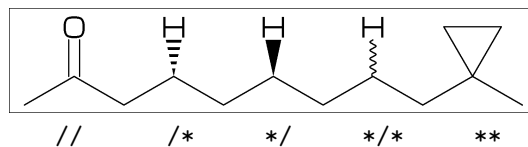
*/ : wedge forward

/* : wedge dotted forward

/ : wave

** : direct

<30,!/,/0,!2,/*H,!2,*/H,!2,*/*H,!2,**?3,!)



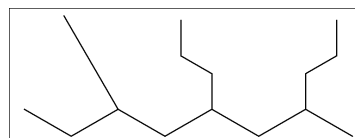
~ : change type

^ : change angle

' : change length

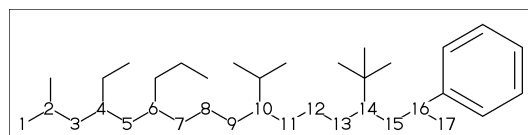
> : change enviroment

<-30,'^1,!/
 /_'^2^30,!2,/*!2>lr,!2,/*!2>r1,!)



2.6.3 Add group

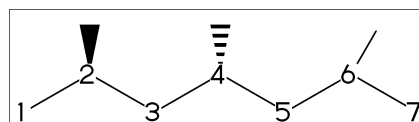
<30,!17,2:/_,4:!/!,6:!/2,
 10:/iPr,14:/tBu,16:/Ph^-60



2.6.4 Add modified group

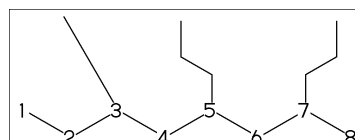
~,^,' : change type,angle,length

<30,!6,
 {2~wf,4~zf,6^-30}:/_



~,^,'> : change angle,length,environment

<-30,!7^1,
 3:/_'^2^30,5:!/2>lr,7:!/2>r1

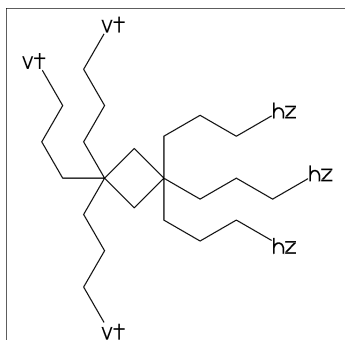


2.7 Chain environment

2.7.1 Horizontal,vertical

>hz : horizontal environment (default)
>vt : vertical environment

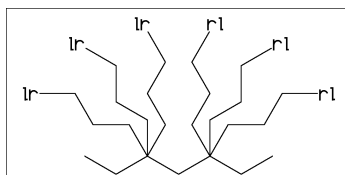
```
?4,  
{3^-90,3^-30,3^90}:/'(!3,"{hz}")>hz,  
{1^-60,1,1^60}:/'(!3,"{vt}")>vt
```



2.7.2 Left-right,right-left

>lr : left-right environment
>rl : right-left environment

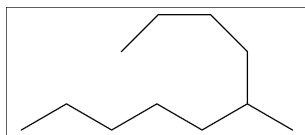
```
<-30,!6,  
{3^-30,3,3^30}:/'(!3,"{lr}")>lr,  
{5^-30,5,5^30}:/'(!3,"{rl}")>rl
```



2.7.3 Fixed rotate angle

>45 : rotate 45

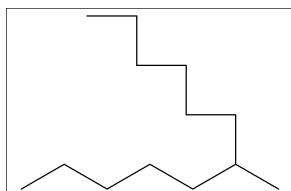
```
<30,!6,6>45:/!3
```



2.7.4 Multi rotate angle

>'(90,-90,...) :rotate 90,-90,...

```
<30,!6,  
6>'(90,-90,90,-90,90)/!5
```

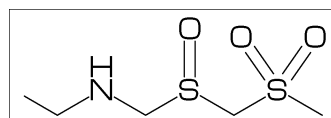


2.8 Miscellaneous

2.8.1 Change atom and add group

NH,S0,S00 :
inset hetero atom and group
simultaneously

```
<-30,!2,NH,! ,S0,! ,S00,!  
<-30,!4,3:NH,5:S0,7:S00
```

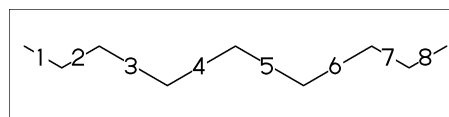


2.8.2 Make block

|< : start block
>| : end block

=| : start block / bond length=n
=| : end block

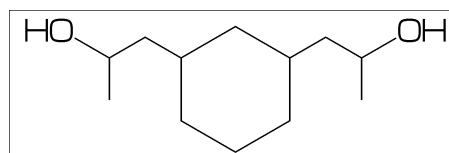
```
<-30,!2,|<,'1.2,!4,>|,!2  
<-30,!2,|=1.2,!4,=|,!2
```



2.8.3 Parts definition

'(..) : user defined parts

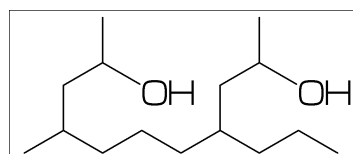
```
iBuOH:='( !,/_,! ,OH);  
MC(<30,!6,{4,6}:/iBuOH)
```



2.8.4 Parts inline definition

```
<30,! , /'( !,/_,! ,OH),  
!4,/'( !,/_,! ,OH),!3
```

```
<30,!8,  
{2,6}:/'( !,/_,! ,OH)
```



3 Option parameter

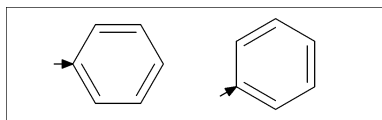
3.1 Angle parameter

mangle=0 ** default

MCat(0.2,0.5)(Ph)

mangle:=30;

MCat(0.8,0.5)(Ph)

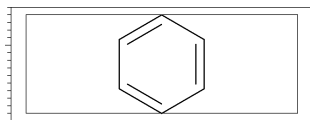


3.2 Size/Ratio parameter

3.2.1 Bond length

(fit to font size)

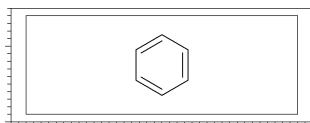
blength=0 ** default



(ratio bond/font width)

blength=0.1 ** (0<blength<=1)

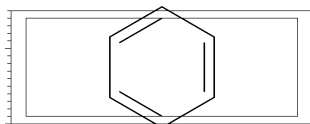
blength=60mm(width)*0.1=6mm



(bond length)

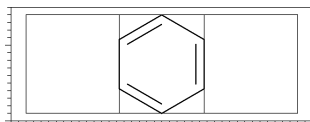
blength=9mm

** (blength>1) ignore msize(w,h)



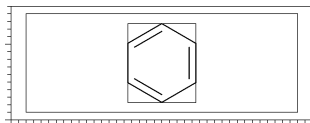
3.2.2 Molecular size

msize=(1,1) ** default

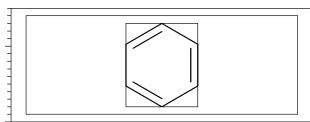


msize=(0.25,1)

msize=40mm-4mm*0.25=9mm

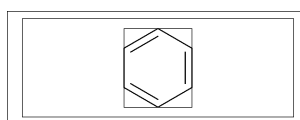


msize=(11mm,11mm)



3.2.3 Molecular position

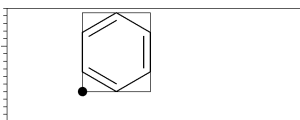
mposition=(0.5,0.5) ** default



mposition=(1,0)



mposition=(10mm,4mm)



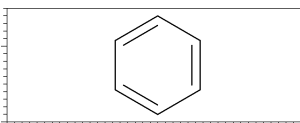
3.3 Size parameter

3.3.1 Font size

FSIZE=(font width,font height)

** default: (30mm,20mm)

FSIZE=(40mm,15mm)

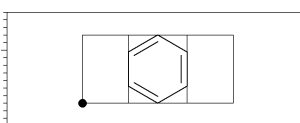


3.3.2 Font margin

fmargin=(margin left right,top bottom)

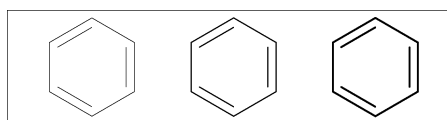
** default: (0.4mm,0.4mm)

fmargin=(10mm,2mm)



3.3.3 Offset thickness of bond

default: offset_thickness=0.2pt



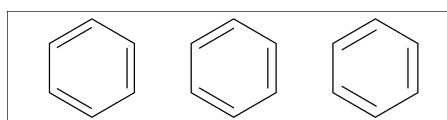
0pt

0.2pt

0.5pt

3.3.4 Offset of doublebond gap

default: offset_bond_gap=0.3pt



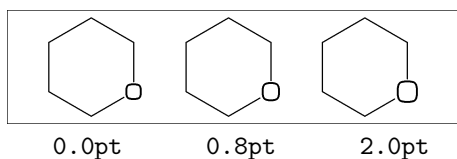
0.0pt

0.3pt

1.0pt

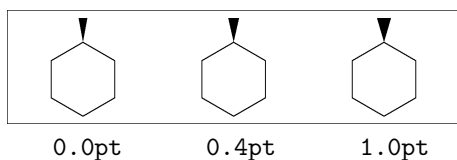
3.3.5 Offset of atom width

default: `offset_atom=0.8pt`



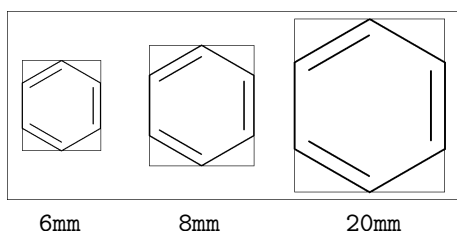
3.3.6 Offset of wedge width

default: `offset_wedge=0.4pt`



3.3.7 Max bond length

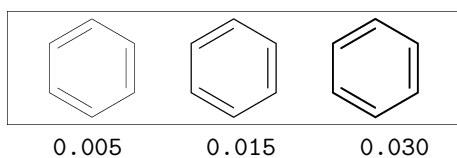
default: `max_blength=10mm`



3.4 Ratio parameter

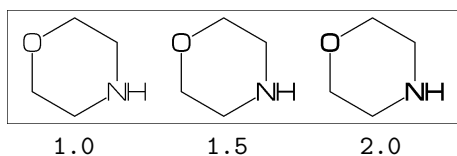
3.4.1 Thickness/bond length

default: `ratio_thickness_bond=0.015`



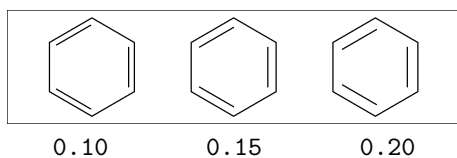
3.4.2 Char/bond thickness

default: `ratio_char_bond=1.5`



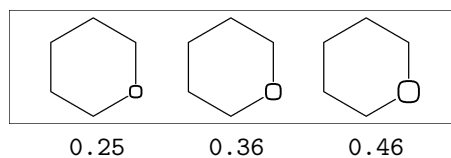
3.4.3 Bondgap/bond length

default: `ratio_bondgap_bond= 0.15`



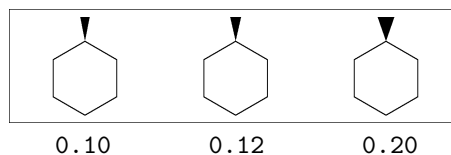
3.4.4 Atom/bond length

default: `ratio_atom_bond= 0.36`



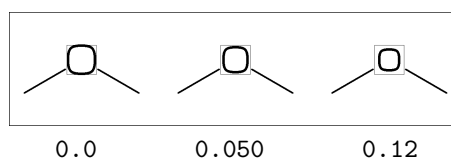
3.4.5 Wedge/bond length

default: `ratio_wedge_bond=0.12`



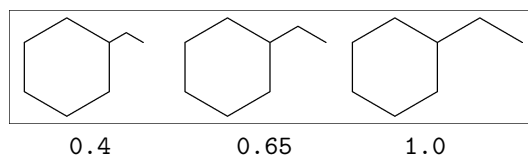
3.4.6 Font atom gap/atom length

default: `ratio_atomgap_atom= 0.050`



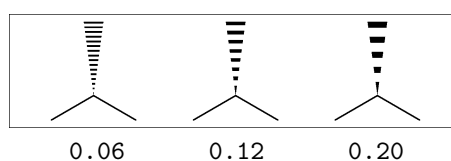
3.4.7 Chain/ring length

default: `ratio_chain_ring= 0.66`



3.4.8 Zebra gap/bond length

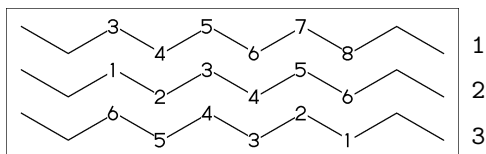
default: `ratio_zebragap_bond=0.12`



3.5 Drawing mode

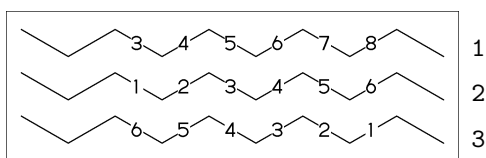
3.5.1 Numbering atom

```
numberA_start:=3; numberA_end:=8;
default: sw_numberA=0 :
  numberA_start=1 numberA_end=4095
```



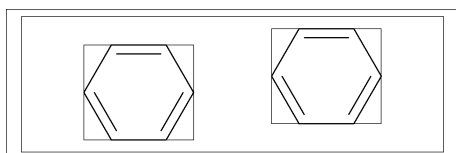
3.5.2 Numbering bond

```
numberB_start:=3; numberB_end:=8;
default: sw_numberB=0 :
  numberB_start=1 numberB_end=4095
```

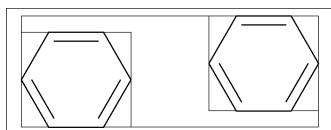


3.5.3 Trimming mode

```
sw_trimming:=0; ** default
msize:=(1,0.7);
MCat(0.2,0.3)(Ph)
MCat(0.8,0.7)(Ph)
```

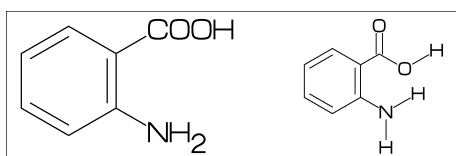


```
sw_trimming:=1;
MCat(0.2,0.3)(Ph)
MCat(0.8,0.7)(Ph)
```



3.5.4 Expand mode

```
MCat(0, .5)(<30,Ph,4:/COOH,3:/NH2)
sw_expand:=1;
MCat(1, .5)(<30,Ph,4:/COOH,3:/NH2)
** default: sw_expand=0
```



3.5.5 Group off mode

```
** default: sw_group_off=0
```



3.5.6 Single bond mode

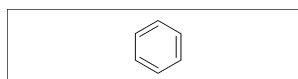
```
** default: sw_single=0
```



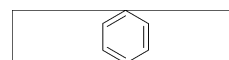
3.6 Frame

3.6.1 Font frame

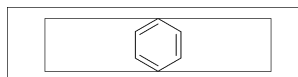
```
(Draw font frame)
fmargin:=(5mm,2mm);
sw_fframe=1
```



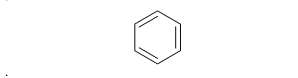
```
(Draw frame inside margin)
sw_fframe=2
```



```
(Draw both frame)
sw_fframe=3
```

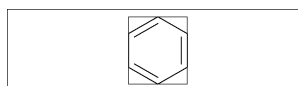


```
(Draw small dot at corner)
sw_fframe=4
```



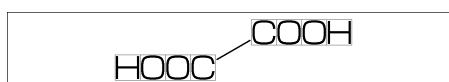
3.6.2 Molecular frame

```
sw_mframe=1 ** default:sw_mframe=0
```



3.6.3 Atom frame

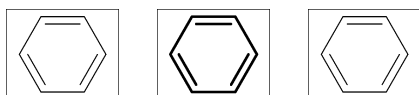
```
sw_aframe=1 ** default: sw_aframe=0
MC(<30,COOH,!,COOH)
```



3.7 Parameter setting

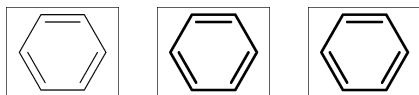
3.7.1 Local parameter setting

```
beginfont()
  MC(Ph)
endfont
beginfont()
  %-----
  ratio_thickness_bond:=0.05;
  %-----
  MC(Ph)
endfont
beginfont()
  MC(Ph)
endfont
```



3.7.2 Global parameter setting

```
beginfont()
  MC(Ph)
endfont
%-----
ratio_thickness_bond:=0.05;
%-----
beginfont()
  MC(Ph)
endfont
beginfont()
  MC(Ph)
endfont
```



4 Function

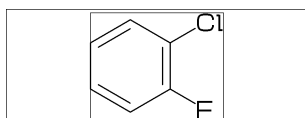
4.1 Function MC()

(Draw molecule)

```
msize=(a,b)      **default (1,1)
mposition=(c,d)  **default (0.5,0.5)
```

a: ratio molecular width/font width
b: ratio molecular height/font height
c: x axis position
d: y axis position

```
beginfont()
  MC(<30,Ph,3:/F,4:/Cl)
endfont
```



4.2 Function MCat()

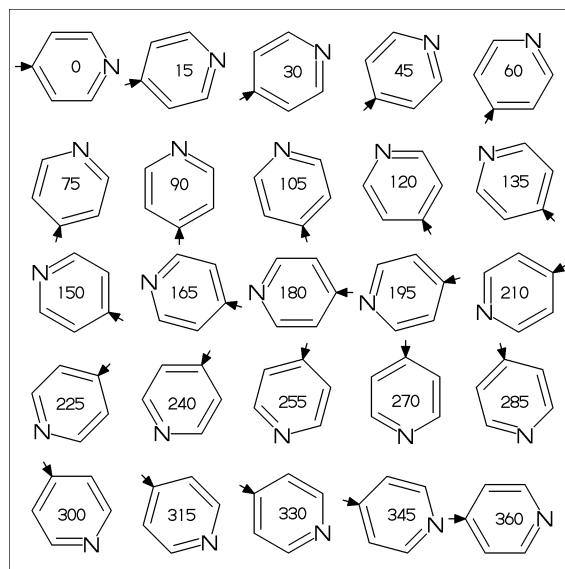
(Draw molecule at mposition)

```
MCat(c,d)(...) :
```

```
mposition:=(c,d);
MC(...)
```

c: x axis position
d: y axis position

```
beginfont()
defaultsize:=5bp;
fsize:=(75mm,75mm);
fmargin:=(3mm,3mm);
blength:=0.07;
sw_fframe:=1;
mangle:=0;
for i=1 step -0.25 until 0:
  for j=0 step 0.25 until 1:
    %-----
    MCat(j,i)(Ph,4:N)
    %-----
    add(
      drawarrow((A1+A1up**aw)..A1);
      label(decimal(mangle),
        p0+(0.5w,0.5h));
    )
    mangle:=mangle+15;
  endfor
endfor
endfont
```



4.3 Function add()

(Add graphic to molecule)

w: molecular width
 h: molecular height
 aw: atom font size
 em: label font size
 p0: origin of molecular structure
 l: bond length

An: atom number
 A[m]: atom position
 A[m]ang: branch angle of A[m]
 A[m]up: dir A[m]ang
 A[m]left: dir A[m]ang+90
 A[m]right: dir A[m]ang-90
 A[m]down: dir A[m]ang+180

Bn: bond number
 B[m]: bond(path)
 B[m]s: bond start position
 B[m]m: bond middle position
 B[m]e: bond end position
 B[m]ang: bond angle
 B[m]up: dir B[m]ang
 B[m]left: dir B[m]ang+90
 B[m]right: dir B[m]ang-90
 B[m]down: dir B[m]ang+180

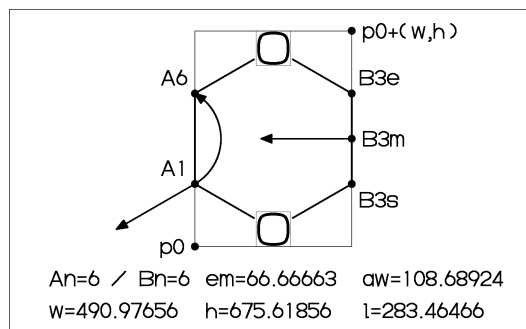
plus : '+' circled
 minus : '-' circled
 circlediam = 0.6aw (default)
 circlepen = 0.2bp (default)

lonpair r: ':' rotated r
 lonpairdiam = 0.3aw (default)
 lonpairspace = 0.7aw (default)

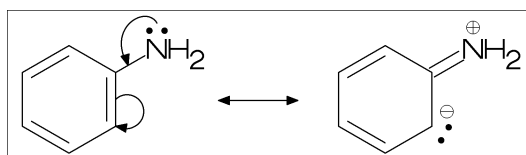
** : scaled
 << : rotated
 a /* b : point b of a

```
beginfont("EN:add() 1")
fsize:=(75mm,45mm);
sw_aframe:=sw_mframe:=1;
max_blength:=12mm;
msize:=(.91,.85);
MCat(.5,.8)(<30,?6,{2,5}:0)
%-----
add(
  defaultscale:=.8;
  labeloffset:=.3aw;
  dotlabel.lft("p0",p0);
  dotlabel.rt("p0+(w,h)",p0+(w,h));
  dotlabel.ulft("A1",A1);
  drawarrow A1..A1+(1,0)<<(A1ang);
  dotlabel.lrt("B3s",B3s);
  dotlabel.rt("B3m",B3m);
  drawarrow B3m..B3m+(1,0)<<(B3ang+90);
```

```
dotlabel.ulft("A6",A6);
drawarrow A1{A1down}..A6;
dotlabel.urft("B3e",B3e);
label.rt("An="&decimal(An)&" / "&
  "Bn="&decimal(Bn),p0+(-w,-1.5em));
label.rt("aw="&decimal(aw),p0+(w,-1.5em));
label.rt("em="&decimal(em),p0+(0,-1.5em));
label.rt("w="&decimal(w),p0+(-w,-3em));
label.rt("h="&decimal(h),p0+(0,-3em));
label.rt("l="&decimal(l),p0+(w,-3em));
)
endfont
```



```
beginfont("EN:add() 2")
fsize:=(60mm,20mm);
msize:=(1,0.85);
%-----
MCat(0,0)(<30,Ph,3=d1,4://NH2)
%-----
add(
  labeloffset:=.7aw;
  label.top(lonpair 90,A7);
  drawarrow
    (A7+up**1.2aw){A7left}
    ..{B7right}B7/*0.3;
  drawarrow
    B3m..A3+B2up**1.5aw..{A3down}A3;
)
%-----
MCat(1,0)(<30,?6,{1,5}=d1,4://NH2)
%-----
add(
  labeloffset:=.7aw;
  label.top(plus,A7);
  label.urft(minus,A3);
  label(lonpair A3ang,A3+A3up**1.7aw);
)
%-----
ext(drawdblarrow (.4w,.4h)..(.55w,.4h));
%-----
endfont
```



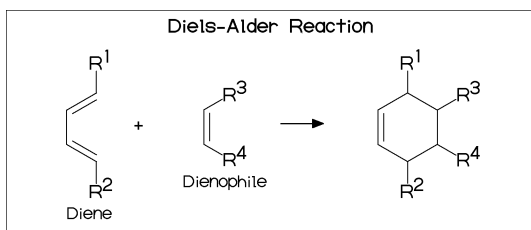
4.4 Function ext()

(Extra graphic to font)

```
w:      font width
h:      font height
w0:     font width-2xpart(fmarg)
h0:     font height-2ypart(fmarg)
aw:     atom font size
em:     label font size
p0:     fmarg

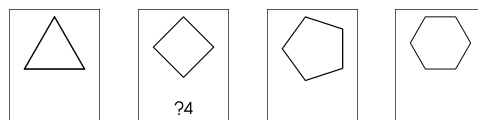
n:      molecular number
p[m]:   molecular origin position
w[m]:   molecular width
h[m]:   molecular height

ratio_thickness_char:
  pen thickness / char width
%-----
beginfont()
  fontsize=(70mm,30mm);
  blength=0.065;
%-----
MCat(0.1,0.5)(
  <-210,60'1,60'1,60'1,{1,3}=d1,
  1:/R1,4:/R2^-60
)
  add(
    defaultscale=0.6;
    label.bot("Diene",p0+(0.5w,0));
  )
MCat(0.4,0.5)(
  <-30,-60'1,1=d1,1:/R3,2:/R4^60
  add(defaultscale=0.6;
  label.bot("Dienophile",p0+(.5w,0));
  )
MCat(0.9,0.5)(
  <30,?6,6=d1,2:/R2,3:/R4,4:/R3,5:/R1
)
%-----
ext(
  drawarrow (.52w,.5h)..(.6w,.5h);
  defaultscale=0.7;
  label("+", (0.25w,0.5h));
  ratio_thickness_char=0.125;
  label.bot("Diels-Alder Reaction",
    (.5w,h));
)
%-----
endfont
```



4.4.1 Local ext() setting

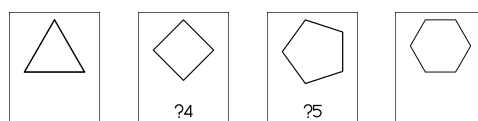
```
beginfont("EN:?3")
  fontsize=(12mm,15mm);
  MCat(0.5,1)(<30,?3)
endfont
beginfont("EN:?4")
  fontsize=(12mm,15mm);
  MCat(0.5,1)(?4)
  %-----
  ext(label.top(inf_EN,(0.5w,0));)
  %-----
endfont
beginfont("EN:?5")
  fontsize=(12mm,15mm);
  MCat(0.5,1)(?5)
endfont
beginfont("EN:?5")
  fontsize=(12mm,15mm);
  MCat(0.5,1)(?6)
endfont
```



4.4.2 Global ext() setting

ext_clear: reset global ext()

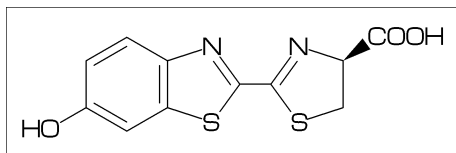
```
beginfont("EN:?3")
  fontsize=(12mm,15mm);
  MCat(0.5,1)(<30,?3)
endfont
%-----
ext(label.top(inf_EN,(0.5w,0));)
%-----
beginfont("EN:?4")
  fontsize=(12mm,15mm);
  MCat(0.5,1)(?4)
endfont
beginfont("EN:?5")
  fontsize=(12mm,15mm);
  MCat(0.5,1)(?5)
endfont
%-----
ext_clear;
%-----
beginfont("EN:?6")
  fontsize=(12mm,15mm);
  MCat(0.5,1)(?6)
endfont
```



5 MCF example

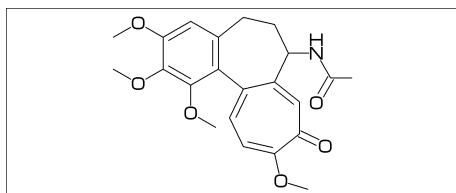
5.1 Luciferin

```
beginfont("EN:Luciferin","MW:280.33")
  fsize:=(60mm,20mm);
  MC(
    <30,Ph,3=?5,8:\,?5,{9,16}=d1,
    {9,14}:N,{7,11}:S,1:/OH,-2:*/COOH
  )
endfont
```



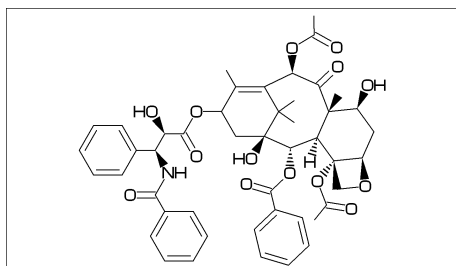
5.2 Colchicine

```
beginfont("EN:Colchicine","MW:385.41")
  fsize:=(60mm,25mm);
  MC(
    <30,Ph,{1,2,6}:/O!,|,-4=?7,
    |,-5=?7,{-1,-4,-6}=d1,
    -2://0,-3:/O!,
    $9:\,NH,!,//0,!
  )
endfont
```



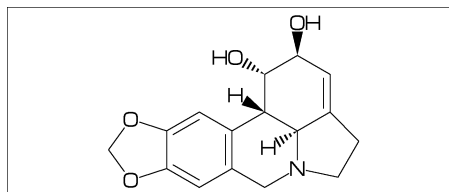
5.3 Paclitaxel

```
beginfont("EN:Paclitaxel","MW:853.91")
  MC(
    ?6,5=d1,3:@,|=1,36,45,45,45,45,|=|,
    $5:#,-4=?6,-4=?4,-1=wb,-3=wf,-1:0,||,
    {4^35,4^-35,6}:/_,{3^-60,15}:/OH,
    8:/*H^-60,9:*/_^-60,10://0,
    1:\,0,!,//0,!,*OH,!/,Ph,
    60~wf,NH,-60,//0,60,Ph,
    7:\*,0,-45,//0,60,Ph,
    11:\,0,-60,//0,60,
    12:\*^-15,0,60,//0,-60
  )
endfont
```



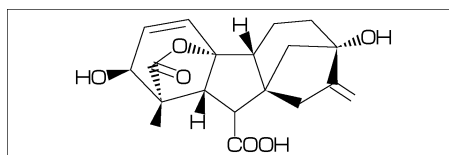
5.4 Lycorine

```
beginfont("EN:Lycorine","MW:287.31")
  fsize:=(60mm,25mm);
  MC(<30,
    Ph,-4=?6,-2=?6,6=?5,(9,12)=?5[3],
    13=d1,8:N,{15,17}:0,
    9:/*H^-180,10:*/H^60,13:*/OH,14:/*OH
  )
endfont
```



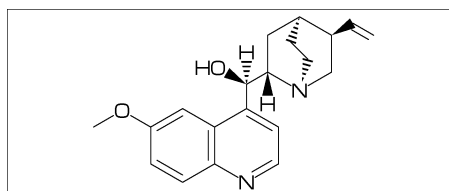
5.5 Gibberellin

```
beginfont("EN:Gibberellin","MW:346.37");
  fsize:=(60mm,20mm);
  MC(
    <18,?5,3=?7,5=?6[12],8:@,160'1.3,3:#,
    13=d1,6=wf,8=wb,
    5:@,40~zf'1,0,50,//0^180,14~zb:#,
    2:/COOH,7://_,13:*/OH,8:/*OH,
    14:*/_,{1,4}:/H^60
  )
endfont
```



5.6 Quinine

```
beginfont("EN:Quinine","MW:324.42")
  fsize:=(60mm,25mm);
  MC(
    <30,Ph,3=Ph,7:N,6:/O!,
    10:\,*/OH,/H~zf^-60,! ,
    |,?6,2:N,1:*/H^60,4:*!\,!! ,
    2:@,165~zf,60,5~zb:#
  )
endfont
```



6 Example to use mcf2graph

6.1 Molecular definition file

```
%-----  
input mcf2graph.mf;                                % input macro  
%-----  
sw_aux_out:=1;          % aux(information) file output on > Global setting  
fsize:=(60mm,40mm);    % (font width,font height)      >  
tag1:="F";              > AUX file table  
tag2:="C";              >  
tag3:="mw";             >  
tag4:="fm";             >  
%% sw_rep_out:=1;      > Report output  
%% sw_mol_out:=1;     > MOL file output  
outputformat:="png";  hppp:=vppp:=0.1;                > PNG output  
outputtemplate:="%j-%3c.png";                          >  
%-----  
beginfont("N:1","EN:Ampicillin")                    > begin font(information)  
  MC(<45,?4,2:N,2=?5,-1:S,                            > begin MCF (1)  
    {3^45,4^-45}:/*H,1://O^15,5:/*COOH^-18,           >  
    {6^35,6^-35}:/_ ,                                  >  
    4:@,75,NH,! ,//O,! ,/*NH,! ,Ph)                  > end MCF  
endfont                                                > end font  
%-----  
beginfont("N:2","EN:Cholesterol")                    > begin font(information)  
  MC(<30,?6,{-4,-2}?6,-4=?5,7=d1,                     > begin MCF (2)  
    1:*/OH,{4,12}:*/_ ^60,9:*/H^60,                  >  
    10:/*H^180,{11,-1}:/*H^-60,                      >  
    -1:@,17,/*_ ,!4,/_ ,!)                            > end MCF  
endfont                                                > end font  
%-----  
beginfont("N:3","EN:Limonin")                        > begin font(information)  
  MC(<30,?6,{-3,-4}?6,                                  > begin MCF (3)  
    -5=?3,-2=wf,-1=wb,6=?5,-4=?6,-5=wf,            >  
    {13,15,17,20}:0,{3,12,21}://O,                  >  
    {4~wf^60,8~zf^60,18^35,18^-35}:/_ ,             >  
    {1^60,5^180,16^60}:/*H,                          >  
    14:\*,| ,?5,{1,4}=d1,3:0)                        > end MCF  
endfont                                                > end font  
%-----  
beginfont("N:4","EN:beta-carotene")                  > begin font(information)  
  MC(<30,?6,3=d1,{3,5^35,5^-35}:/_ ,                 > begin MCF (4)  
    4:\ ,| ,!18,{1,3,5,7,9,11,13,15,17}=dr,         >  
    {3,7,12,16}:/_ ,                                  >  
    | ,?6,6=d1,{6,2^35,2^-35}:/_ )                  > end MCF  
endfont                                                > end font  
%-----  
bye
```

6.2 Information auxfile output

(Insert option parameter setting)

```
sw_aux_out=1 : tag1:var1;tag2:var2
sw_aux_out=2 : tag1;tag2 var1;var2
** default : sw_aux_out=0
```

(Command line)

```
>mpost -s ahlength=1 FILENAME (sw_aux_out=1)
>mpost -s ahlength=2 FILENAME (sw_aux_out=2)
```

(Source)

```
beginfont("EN:Ampicillin")    .... endfont
beginfont("EN:Cholesterol")   .... endfont
beginfont("EN:Limonin")       .... endfont
beginfont("EN:beta-Carotene") .... endfont
```

(Setting)

```
tag1:="F"; tag2:="C"; tag3:="mw"; tag4:="fm"; tag5:="EN";
```

(Output)

(sw_aux_out=1)

```
F:mcf_man_soc;C:1;mw:349.40462;fm:C16H19N3O4S;EN:Ampicillin
F:mcf_man_soc;C:2;mw:386.6532;fm:C27H46O;EN:Cholesterol
F:mcf_exa_soc;C:3;mw:470.5113;fm:C26H30O8;EN:Limonin
F:mcf_exa_soc;C:4;mw:536.8722;fm:C40H56;EN:beta-Carotene
```

(sw_aux_out=2)

```
F;C;mw;fm
mcf_man_soc;1;349.40462;C16H19N3O4S;Ampicillin
mcf_man_soc;2;386.6532;C27H46O;Cholesterol
mcf_exa_soc;3;470.5113;C26H30O8;Limonin
mcf_exa_soc;4;536.8722;C40H56;beta-Carotene
```

(aux_delimiter="/")

```
F:mcf_man_soc/C:1/mw:349.40462/fm:C16H19N3O4S/EN:Ampicillin
F:mcf_man_soc/C:2/mw:386.6532/fm:C27H46O/EN:Cholesterol
F:mcf_exa_soc/C:3/mw:470.5113/fm:C26H30O8/EN:Limonin
F:mcf_exa_soc/C:4/mw:536.8722/fm:C40H56/EN:beta-Carotene
```

(Tag)

```
F : filename
C : char number
NO : serial number
EN : english name
JN : japanese name
FM : formula from literature data
MW : molecular weight from literature data
USE : the use
mw : molecular weight calculated
mi : monoisotopic mass calculated
fm : molecular formula calculated
w : font width
h : font height
```


6.3 Report output

(Insert option parameter setting)

```
sw_rep_out:=1;  
** default : sw_rep_out=0
```

(Command line)

```
>mpost -s ahlenght=3 FILENAME
```

(Output)

```
-----  
Molecular name = Nicotine  
Warnings = 0 / Expanded command = 40  
Width * Height = 49.57332 * 41.37605  
Shift width * height = 0 * -9.07253  
Bond length = 12.75589 Atom size = 5.38914  
Atom count= 12 Bond count= 13 Ring count= 2 Hide H count= 14  
-----  
< NO. >( x axis , y axis )< atom >< bond >< hide_H >  
A1 ( 0 , 0 ) C 3 1  
A2 ( 0.866 , -0.5 ) N 3  
A3 ( 1.732 , 0 ) C 3 1  
A4 ( 1.732 , 1 ) C 4  
A5 ( 0.866 , 1.5 ) C 3 1  
A6 ( 0 , 1 ) C 3 1  
A7 ( 2.304 , 1.33 ) C 3 1  
A8 ( 3.217 , 0.923 ) N 3  
A9 ( 3.886 , 1.666 ) C 2 2  
A10 ( 3.386 , 2.532 ) C 2 2  
A11 ( 2.408 , 2.325 ) C 2 2  
A12 ( 3.399 , 0.067 ) C 1 3  
-----  
< NO. >< bond (sdt)><angle + ( +- )><length ( pt )>  
B1 1 -> 2 ( 2) 330 ( -30) 1 ( 12.76)  
B2 2 -> 3 ( 1) 30 ( 30) 1 ( 12.76)  
B3 3 -> 4 ( 2) 90 ( 90) 1 ( 12.76)  
B4 4 -> 5 ( 1) 150 ( 150) 1 ( 12.76)  
B5 5 -> 6 ( 2) 210 ( -150) 1 ( 12.76)  
B6 6 -> 1 ( 1) 270 ( -90) 1 ( 12.76)  
B7 4 -> 7 ( 1) 30 ( 30) 0.66 ( 8.42)  
B8 7 -> 8 ( 1) 336 ( -24) 1 ( 12.76)  
B9 8 -> 9 ( 1) 48 ( 48) 1 ( 12.76)  
B10 9 -> 10 ( 1) 120 ( 120) 1 ( 12.76)  
B11 10 -> 11 ( 1) 192 ( -168) 1 ( 12.76)  
B12 11 -> 7 ( 1) 264 ( -96) 1 ( 12.76)  
B13 8 -> 12 ( 1) 282 ( -78) 0.66 ( 8.42)  
-----  
<atom>( atom wt ) [ mi wt ] < cnt > < sum wt > [ sum mi wt ]  
C ( 12.0107) [ 12 ] * 10 = 120.10696 [ 120 ]  
H ( 1.00793) [ 1.00783 ] * 14 = 14.11108 [ 14.10959 ]  
N ( 14.0067) [ 14.00307 ] * 2 = 28.0134 [ 28.00613 ]  
Molecular Weight [ Mono Isotopic ] = 162.2314 [ 162.11572 ]  
-----  
Weight Calc: 162.2314 / Input: 162.23 / weight gap= 0.00145  
Fomula Calc: C10H14N2 / Input:  
=====
```

6.4 MOL file output

(Insert option parameter setting)

```
sw_mol_out:=1;      % MOL(V2000)
sw_mol_out:=2;      % MOL(V3000)
** default : sw_mol_out=0
```

(Command line)

```
>mpost -s ahlength=5 FILENAME      % MOL(V2000)
>mpost -s ahlength=6 FILENAME      % MOL(V3000)
```

(Output)

%%%%%%%%%%%%%%%%%%%%%%%%%%%%%%%%%%%%%%%%%%%%%%%%%%%%%%%%%%%%%%%%%%%%%%%%%

-MCFtoMOL- EN:Caffeine

```
14 15  0  0  0  0  0  0  0  0999 V2000
      0      0      0 C  0  0  0  0
  0.86603    -0.5      0 N  0  0  0  0
  1.73206      0      0 C  0  0  0  0
  1.73206      1      0 C  0  0  0  0
  0.86603     1.5      0 C  0  0  0  0
      0      1      0 N  0  0  0  0
  2.6831   -0.30902    0 N  0  0  0  0
  3.27089      0.5      0 C  0  0  0  0
  2.6831    1.30902    0 N  0  0  0  0
  0.86603   -1.36383    0 C  0  0  0  0
 -0.76894    1.44394    0 C  0  0  0  0
 -0.76894   -0.44394    0 D  0  0  0  0
  0.86603    2.36383    0 D  0  0  0  0
  2.95299    2.1396     0 C  0  0  0  0
  1  2  1  0      0  0
  2  3  1  0      0  0
  3  4  2  0      0  0
  4  5  1  0      0  0
  5  6  1  0      0  0
  6  1  1  0      0  0
  3  7  1  0      0  0
  7  8  2  0      0  0
  8  9  1  0      0  0
  9  4  1  0      0  0
  2 10  1  0      0  0
  6 11  1  0      0  0
  1 12  2  0      0  0
  5 13  2  0      0  0
  9 14  1  0      0  0
```

M END

%%%%%%%%%%%%%%%%%%%%%%%%%%%%%%%%%%%%%%%%%%%%%%%%%%%%%%%%%%%%%%%%%%%%%%%%%

6.5 LuaTeX file example

```

%-----
\documentclass{article}
\usepackage{luamplib}%
\mplibcodeinherit{enable}%
\mplibverbatim{enable}%
\everymplib{if unknown Ph1:
    input mcf2graph.mf;
    mp_log_name:="temp-info.aux";
    sw_aux_out:=1;
    fi}%
%-----
\begin{document}
\noindent%
%-----
\begin{mplibcode}
  fsize:=(50mm,50mm);
  beginfont("NO:1","EN:Limonin","MW:470.51")
  MC(<30,
    ?6,{-3,-4}=?6,
    -5=?3,-2=wf,-1=wb,6=?5,-4=?6,-5=wf,
    {13,15,17,20}:0,{3,12,21}://0,
    {4~wf^60,8~zf^60,18^35,18^-35}:/_,
    {1^60,5^180,16^60}:/H,
    14:\*,|,?5,{1,4}=d1,3:0
  )
  endfont
\end{mplibcode}\\
%-----
\begin{mplibcode}
  fsize:=(80mm,50mm);
  beginfont("NO:2","EN:beta-carotene","MW:536.87")
  MC(<30,
    ?6,3=d1,{3,5^35,5^-35}:/_,
    4:\,|,!18,{1,3,5,7,9,11,13,15,17}=dr,
    {3,7,12,16}:/_,
    |,?6,6=d1,{6,2^35,2^-35}:/_
  )
  endfont
\end{mplibcode}\\
%-----
\begin{mplibcode}
  fsize:=(50mm,50mm);
  beginfont("NO:3","EN:Gibberellin A3","MW:346.37");
  MC(<18,?5,3=?7,5=?6[12],
    8:@,160'1.3,3:#,13=d1,6=wf,8=wb,
    5:@,40~zf'1,0,60,//0^180,14~zb:#,
    2:/COOH,7://_,13:*/OH,8:/*OH,
    14:*/_,{1^60,4^60}:/H
  )
endfont;
\end{mplibcode}\\
%-----
\end{document}
%-----

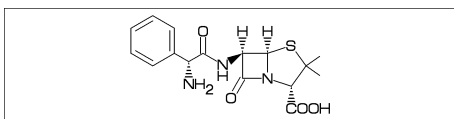
```

6.6 LaTeX file example

```
%-----  
\documentclass[a4paper]{article}  
\usepackage{graphicx}  
%-----  
\usepackage{mcf_setup}  
%-----  
\pagestyle{empty}  
\makeatletter%  
%-----  
\def\put@char{%  
  \begin{picture}(84,42)%  
    \put(0,38){\bf [MOLnum]\EN{ }\small\tt/FM:\fm/MW:\mw}%  
    \put(10,0){\font\@strufont=\File\relax%  
      \hbox{\@strufont\char\Char}}%  
  \end{picture}%  
}%  
\def\INFO#1{\@for\@temp:=#1\do{\tag@var\@temp}\put@char}%  
\makeatother  
%-----  
\begin{document}  
\unitlength=1mm%  
\INFO{F:mcf_man_soc,C:139,NO:1,mw:349.40462,fm:C16H19N3O4S,EN:Ampicillin}%  
\INFO{F:mcf_man_soc,C:140,NO:2,mw:386.6532,fm:C27H46O,EN:Cholesterol}%  
\end{document}  
%-----
```

[1]Ampicillin

FM:C16H19N3O4S MW:349.40462



[2]Cholesterol

FM:C27H46O MW:386.6532

